

# Utility Partnerships in Salmon Recovery – Cowlitz Restoration and Recovery Program

Cowlitz Annual Program Review  
and Science Conference

September 4, 2024



Lower  
Columbia  
Fish Recovery Board

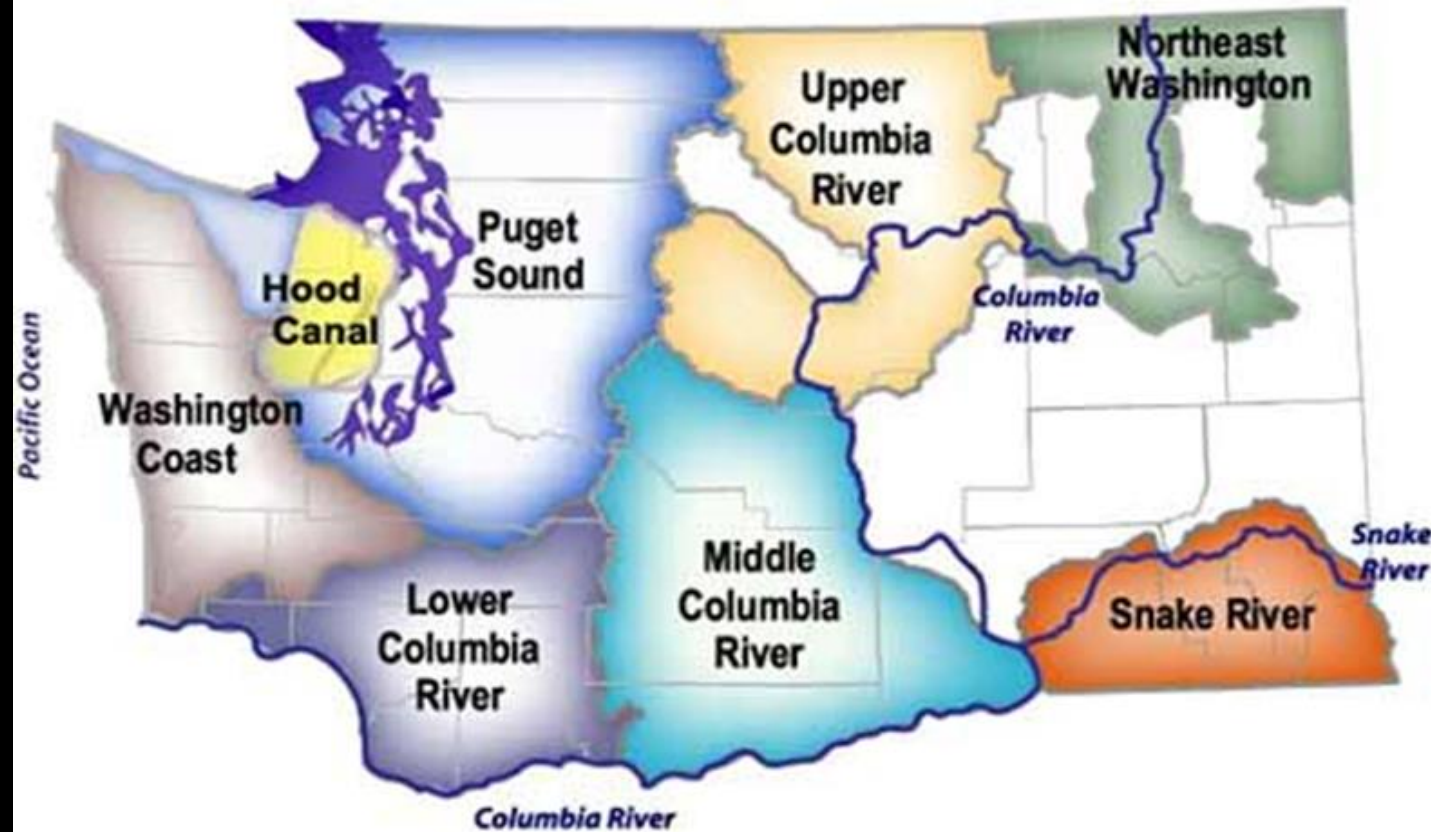
Steve Manlow, Executive Director

# Purpose

Outline a collaborative recovery partnership in Southwest Washington between the Lower Columbia Fish Recovery Board and Tacoma Power

# Salmon Recovery Regions

Established pursuant to  
RCW 77.85.090



# Regional Organization Roles & Responsibilities

- Develop locally-based, federally approved salmon and steelhead recovery plans
- Oversee implementation, monitoring and adaptive management
- Track and report on accomplishments

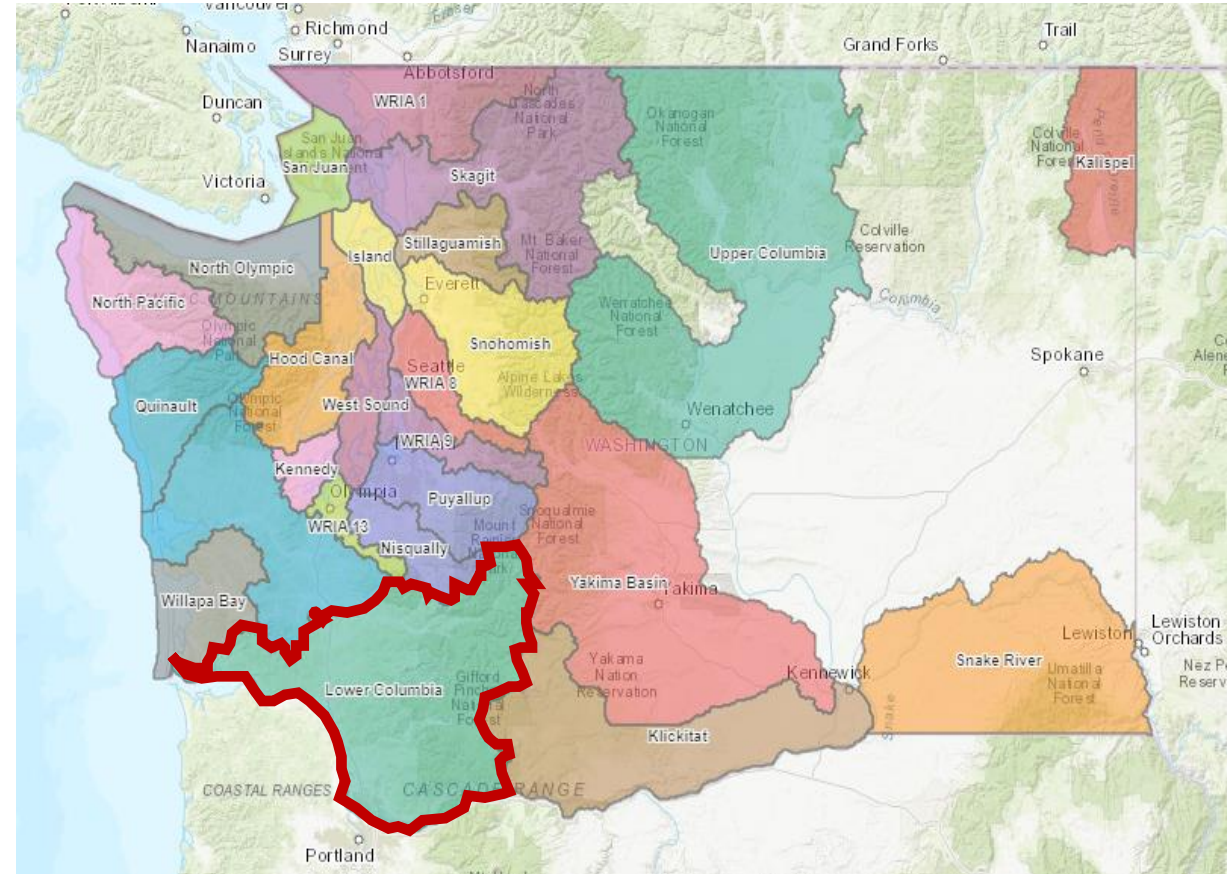
Washington Lower Columbia Salmon Recovery  
And  
Fish & Wildlife Subbasin Plan



Lower Columbia Fish Recovery Board  
May 28, 2010  
Final

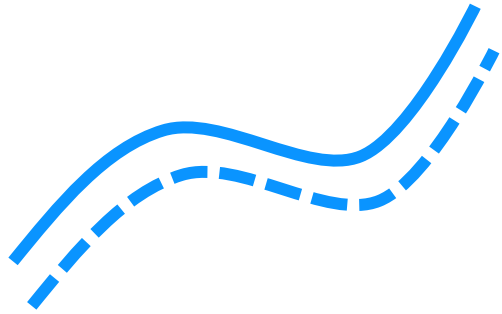
# Lead Entity Roles & Responsibilities

- Develop and maintain a habitat strategy
- Solicit, evaluate, and rank and Salmon Recovery Funding Board projects for funding

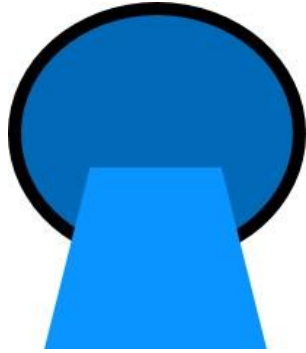


# Conservation and Restoration Accomplishments

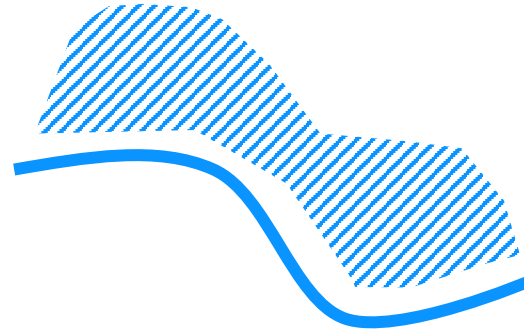
**\$207 Million in Allocated Investments Results In...**



**500+ Stream Miles Treated**



**100+ Fish Passage Barriers Addressed**



**400+ Acres of Off-Channel/Floodplain Reconnected**



**1,800+ Riparian Acres Treated**



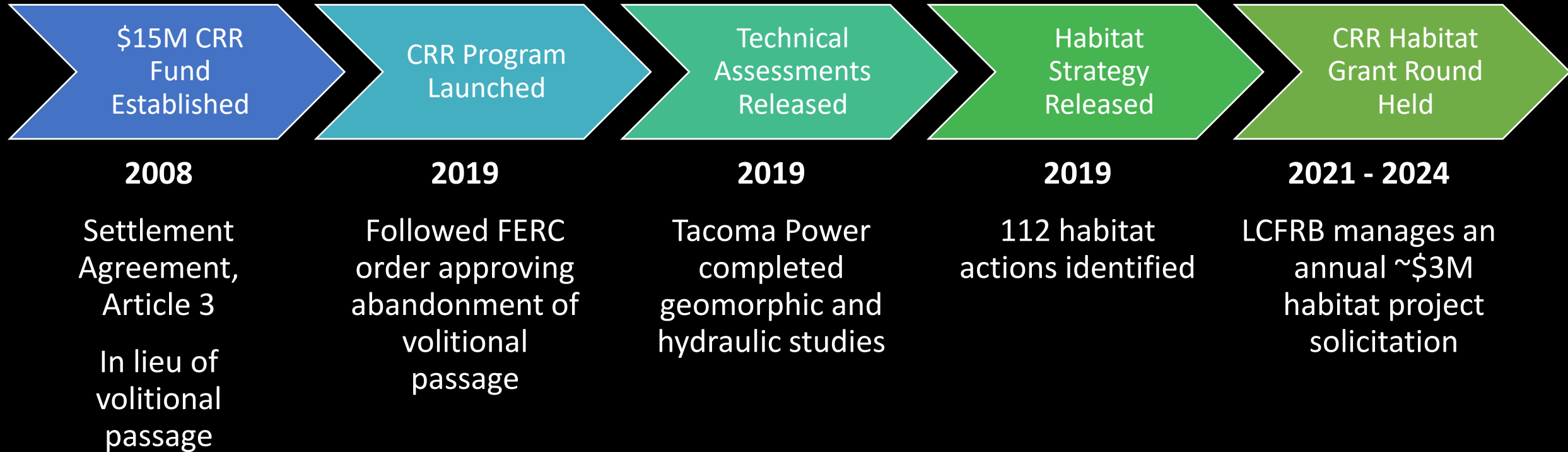
**100+ Stream Miles Protected**

*\*Funded, active and completed project metrics and total project costs from Salmon Recovery Portal (6/27/2024)*

# Cowlitz Restoration and Recovery (CRR) Fund

Protect and promote restoration and recovery of upper Cowlitz River basin salmonid populations listed under the federal Endangered Species Act (ESA)

# Cowlitz Restoration and Recovery (CRR) Fund



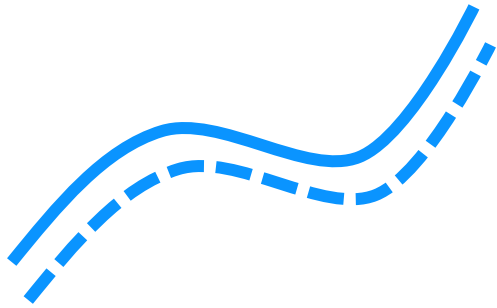


# Cowlitz Restoration and Recovery Program

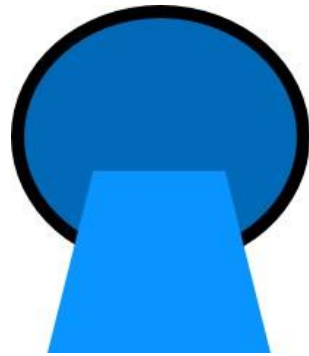
Year	Watershed	Project Name	Sponsor	CRR Award	Total Project Cost
2019	Cispus	Cispus-Yellowjacket Phase III Restoration	Cowlitz Indian Tribe	\$ 593,677	\$ 1,739,992
2021	Cispus	Cispus Floodplain Reconnection Design	Cowlitz Indian Tribe	\$ 362,200	\$ 362,200
2022	Upper Cowlitz, Cispus, Tilton	Upper Cowlitz Culvert Inventory	Lewis Conservation District	\$ 134,820	\$ 134,820
	Cispus	Creating Habitat on Cispus Tributaries	Cascade Forest Conservancy	\$ 138,355	\$ 190,355
	Upper Cowlitz	Kiona Creek Restoration Design	Lewis County PUD	\$ 70,071	\$ 140,141
	Cispus	Cispus-Yellowjacket Phase IV Restoration	Cowlitz Indian Tribe	\$ 2,457,184	\$ 2,772,260
2023	Upper Cowlitz	Restoration of Crystal and Woods Creeks	Cascade Forest Conservancy	\$ 168,098	\$ 213,372
	Upper Cowlitz	Riparian and Channel Enhancements of Hall Creek	Cascade Forest Conservancy	\$ 61,048	\$ 85,550
2024	Cispus	Cispus-Yellowjacket Phase 5 Design	Cowlitz Indian Tribe	\$ 345,077	\$ 345,077
	Upper Cowlitz	Silver Creek Restoration Opportunity Identification	Cascade Forest Conservancy	\$ 70,463	\$ 70,463
			<b>Total Funding</b>	<b>\$ 4,400,993</b>	<b>\$ 6,054,230</b>

# Cowlitz Restoration and Recovery Program

## 10 Funded CRR Projects Results In...



**1.75 Stream Miles  
Treated**



**Approx. 300 Fish  
Passage Barriers  
Identified**



**18 Riparian Acres  
Treated**



**9 Restoration  
Designs**



# Benefits of Partnership

- Strengthens alignment between recovery priorities and Utility program goals and efforts
- Builds upon and leverages well established and successful grant programs:
  - Robust technical evaluation
  - Existing sponsor base
  - Community support
- Brings additional funds to the basin



# Regional Viability Assessment – Take Home Messages

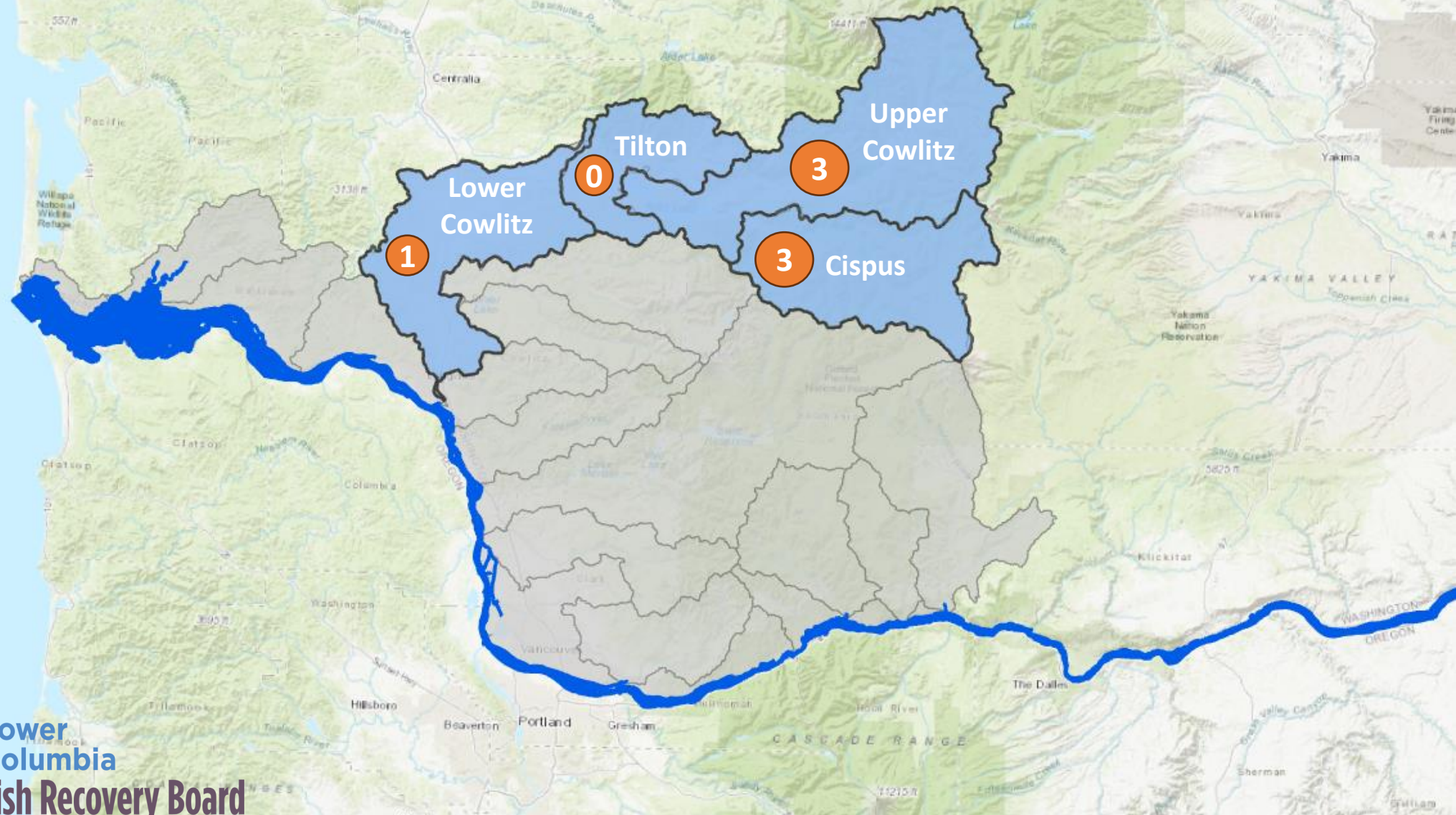
- Long term declining trends appear to have been arrested for review period
- Viability of 20 of our 72 populations (35%) is greater than at time of listing
- 14 populations (19%) are currently at high or very high viability
- Species level improvements observed for tule fall Chinook, coho, chum and winter and summer steelhead
- Spring Chinook continue at very low viability – successful reintroduction into hydro blocked habitat is needed
- While some trends are encouraging, 46 of 72 populations (64%) are at low or very low viability, so delisting cannot yet be considered.

# ESA Listed Populations

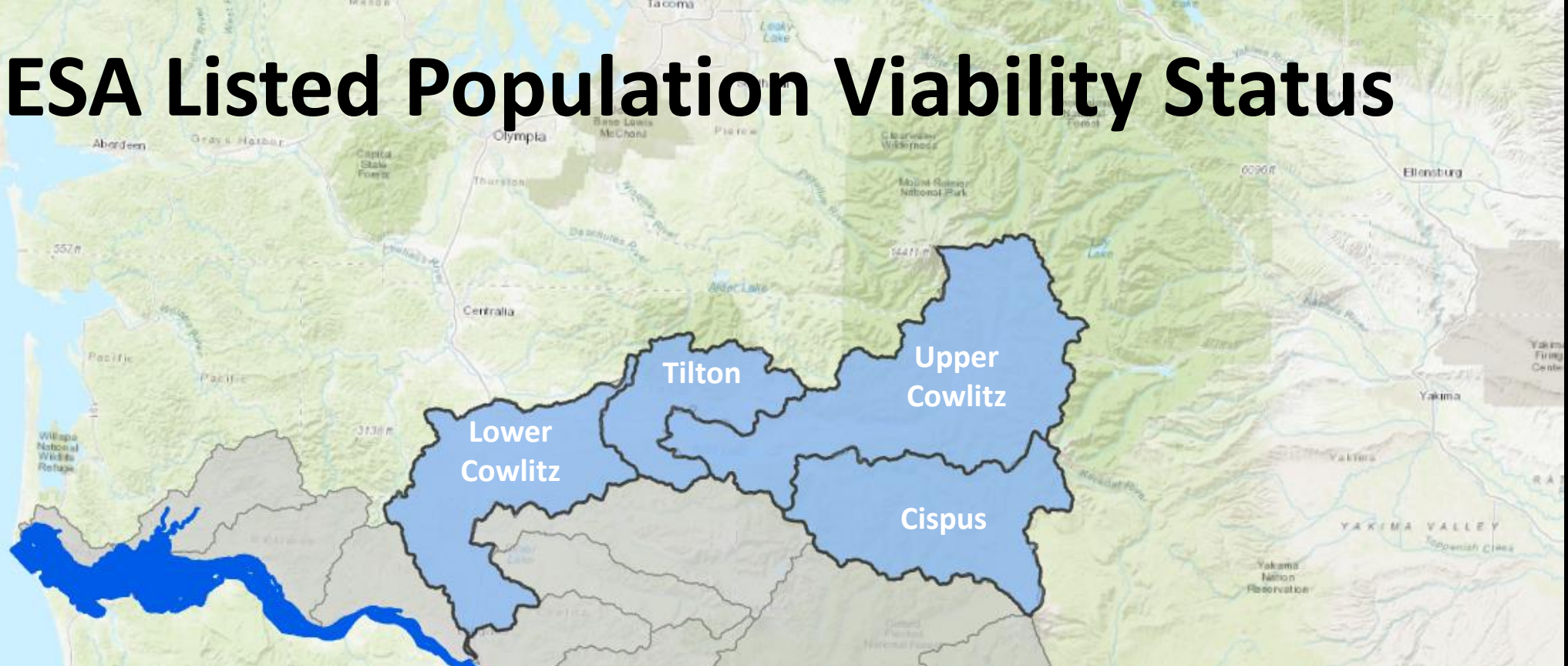


\*Upper Cowlitz Tule Fall Chinook included in Tilton, Upper Cowlitz and Cispus counts

# ESA Listed Primary Populations



# ESA Listed Population Viability Status



Subbasin	Chinook		Coho	Chum	Steelhead
	Fall	Spring		Fall	Winter
Lower Cowlitz	VL/M	--	VL/H*	VL	L/M*
Tilton		VL	VL*	--	VL
Upper Cowlitz	VL/M**	VL	VL	--	VL
Cispus		VL	VL	--	VL
<b>Avg. Viability (2020)</b>	L	VL	L	L	M
<b>Avg. Viability (Baseline, 1998 - 1999)</b>	VL	VL	VL	VL	L





# Next Steps for Recovery

- Expand community engagement in habitat restoration programs
- Continue to improve collection efficiencies to support viable populations
- Continue to align harvest and hatchery programs with recovery needs
- Update region-wide habitat strategy
- Expand spatial distribution and abundance of chum

# Thank you for supporting salmon recovery!



Lower  
Columbia  
Fish Recovery Board

# Questions?

Extra slides

# Viability

## Current Viability

\* Meeting Goal

\*\* Surpassing Goal

Dark grayed out = professional judgement to identify current status

	Subbasin	Chinook			Coho	Chum		Steelhead	
		Fall	L Fall	Spring		Fall	Summer	Winter	Summer
Coast	Grays/Chinook	VL	--	--	VL	M/VH*	--	M	--
	Eloch./Skam.	VL	--	--	VL	VL/L	--	M	--
	Mill/Aber./Ger.	VL	--	--	VL/L	VL	--	M	--
Cascade	Lower Cowlitz	VL/M	--	--	VL/H*	VL	VL	L/M*	--
	Coweeman	VL/M	--	--	VL/VH**			L/H*	--
	NF Toutle	VL	--	VL	VL			VL	--
	SF Toutle		--	VL	VL/M			M/H	--
	Tilton	VL/M**	--	VL	VL*	--	VL	--	
	Upper Cowlitz		--	VL	VL	--	VL	--	
	Cispus		--	VL	VL	--	VL	--	
	Kalama		VL/L	--	VL	VL	VL	--	L/VH**
	NF Lewis	VL/M	VH*	VL	VL	VL	--	VL	VL*
	EF Lewis		--	--	VL/L		--	M/H*	VL/VH**
	Salmon	VL*	--	--	VL/H**	VL*	--	VL*	--
	Washougal	VL	--	--	VL	VL/VH**	--	L/M*	M/VH**
Gorge	Lower Gorge	VL/M*	--	--	VL/M	H/VH*	--	L	--
	Upper Gorge	VL	--	--	VL	VL	--	L*	H
	White Salmon	VL	--	VL			--		--

No. @ Goal	2	1	0	3	3	0	5	2
No. @ Very High	0	1	0	1	1	0	1	2
No. @ High	0	0	0	2	2	0	3	1
No. @ Moderate	5	0	0	2	2	0	5	0
No. @ Low	1	0	0	2	2	0	2	1
No. @ Very Low	8	0	7	10	10	1	6	1
Avg. Viability (current)	L	VH	VL	L	L	VL	M	M
Avg. Viability (at listing)	VL	VH	VL	VL	VL	VL	L	L

Viability Key	VL = Very Low Score = 0	L = Low Score = 1	M = Medium Score = 2	H = High Score = 3	VH = Very High Score = 4
---------------	----------------------------	----------------------	-------------------------	-----------------------	-----------------------------

# Where are we today?

■ Baseline Abundance 
 ■ 12-Year Geometric Mean Abundance 
 ■ ESA Delisting Abundance Goal

